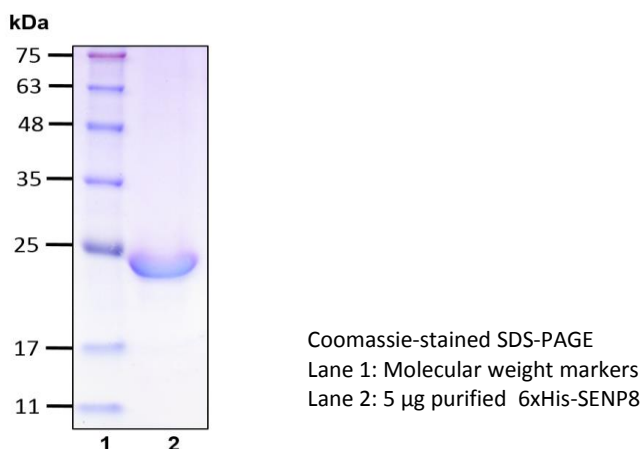


# 6xHis-SENP8

Cat. # H9820, H9821

<b>Also Known as:</b>	DEN1; NEDP1; PRSC2
<b>NCBI Reference:</b>	NM_001166340.1
<b>MW (no tag):</b>	24.1 kDa
<b>Species:</b>	Human
<b>Source:</b>	Bacterial recombinant
<b>Tag:</b>	6xHis
<b>Stock Buffer:</b>	20 mM Tris, 150 mM NaCl, 2 mM $\beta$ ME, 10% Glycerol
<b>Concentration:</b>	See tube label
<b>Quality Assurance:</b>	>95% by SDS-PAGE

## Image



**Description:** Neural precursor cell expressed developmentally downregulated 8 (Nedd8) is a ubiquitin-like protein. Nedd8 can be conjugated on culin proteins and this modification plays a key role in activation of culin-based E3 ubiquitin ligases. SENP8 (also called NEDP1) is a cysteine protease that specifically cleaves the Nedd8 precursor to generate mature Nedd8 and deconjugates neddylated proteins including culins and p53.

**Storage:** Store at -80°C; avoid multiple freeze-thaw cycles

**Literature:**

1. Gan-Erdene T, *et al.* (2003) J Biol Chem. 278(31):28892-900.
2. Mendoza HM, *et al.* (2003) J Biol Chem. 278(28):25637-43.

